



Play The **WOODLAND WEB** Game



This is a game for 4 players.
It is designed to help you to understand the complicated feeding relationships
in a wood.

Each player needs a playing board showing the four trophic levels.
You will need to copy and cut out (preferably onto card)-



- 108 plant cards
- 36 herbivore cards (first level consumers)
- 12 insectivores (second level consumers)
- 4 top carnivores (third level consumers)

How to Play

Each player has a playing board in front of them. The cards are carefully shuffled and placed in a pile, face down, in the centre of the table. Each player takes a card from the top of the pile in turn. He can only move up the levels if he has already collected enough cards at each lower level. Each player must therefore collect **plant** cards first. Any others are replaced on the bottom of the pile. When a player has collected three plant cards he may collect one herbivore card. He must then collect three more plant cards before he can collect another plant eater. All cards must be taken from the top of the pile.

When he has collected three herbivores he can collect an insectivore and so on.
The winner is the first player to collect a top carnivore by having first collected three insectivores.



BADGER



FOX



**SPARROW-
HAWK**



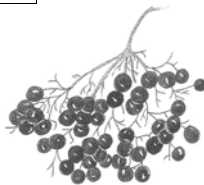
TAWNY OWL



OAK ACORNS



BRAMBLE
FLOWERS



ELDER
BERRIES



BLACK
BERRIES



TOADSTOOL



HAWTHORN
BERRIES



BRACKET
FUNGUS



MOSS



GOAT
WILLOW
FLOWERS



ROSE HIPS



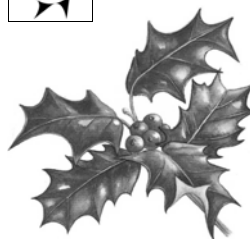
HAZEL NUTS



PINE CONE



BLUEBELL



HOLLY
BERRIES



WILD
CHERRIES



SWEET
CHESTNUTS



ELM BARK



COW
PARSLEY



BEECH TREE



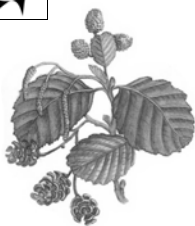
SYCAMORE
LEAVES



DEAD LEAVES



DEAD WOOD



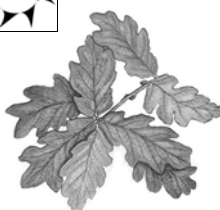
ALDER
CONES



FOXGLOVE



WOOD
SORREL



OAK LEAVES



LARCH
CONES



WILLOW
LEAVES



BLUE TIT



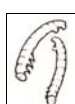
SPIDER



TOAD



THRUSH



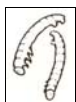
FROG



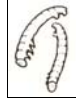
GROUND
BEETLE



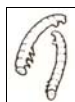
SHREW



HEDGEHOG



LADYBIRD



BAT



CENTIPEDE



WREN



APHID



BLACKBIRD



RABBIT



CATERPILLAR



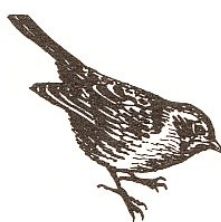
GREY
SQUIRREL



EARTHWORM



BEE



HEDGE
SPARROW



CHAFFINCH



SNAIL



OAK GALL
WASP



JAY



LONGHORN
BEETLE



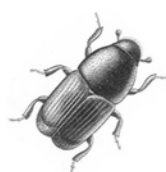
BANK VOLE



WOOD
MOUSE



WOODLOUSE



ELM BARK
BEETLE



SPECKLED
WOOD
BUTTERFLY

PHOTOCOPY 2 SETS
OF THE CARDS ON
THIS SHEET

Woodland Web Game Board

Four copies of this board should be copied onto card and cut out. Ideally they should be expanded to A3 size and then laminated.

